

# CATALOG

# 2026

## New and Refurbished Medical Equipment



**WE OPERATE SO YOU CAN®**

# TABLE OF CONTENTS



Best Quality



Best Value



Warranty



*Click the Venture Medical logo on  
any page to visit our website*



- |                               |                             |
|-------------------------------|-----------------------------|
| 1. Surgical Tables            | 9. Patient Monitors         |
| 2. Surgical Table Accessories | 10. Electrosurgical         |
| 3. Power Exam Tables          | 11. Infusion Pumps          |
| 4. Surgical Lighting          | 12. EKG/Cardiology          |
| 5. Stretchers                 | 13. Defibrillators          |
| 6. Specialty Stretchers       | 14. Miscellaneous Equipment |
| 7. Warming Cabinets           | 15. All Equipment Types     |
| 8. Anesthesia Equipment       | 16. Parts and Service       |



Call Us  
800-627-3215



Email Us  
[salesteam@venturemedical.com](mailto:salesteam@venturemedical.com)

# SURGICAL TABLE CATALOG



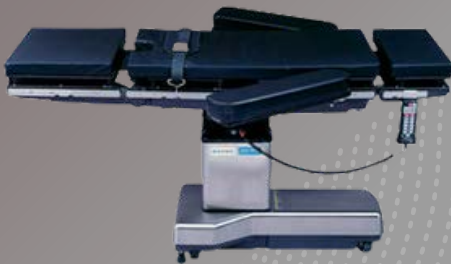
Best Quality



Best Value



Warranty



## Steris 3085SP

\$\$

Modern surgical table that is considered by many to be the industry standard. Weight capacity is 1,000 lbs in normal positioning. Comes completely refurbished with new pad set and 6-month warranty.



## Steris 4085

\$\$\$

Ultra-modern surgical table that includes a sliding top (electric). Bariatric capabilities with 1,100 lbs weight capacity in normal position. Comes completely refurbished with new pad set and 6-month warranty.



## Skytron Hercules 6701

\$\$

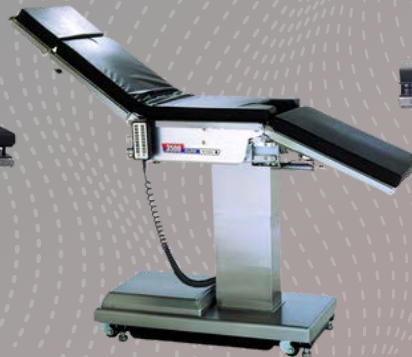
Ultra Modern surgery table with 210° rotating patient surface for increased imaging space. 1200 lbs weight capacity. Comes completely refurbished with new pad set and 6-month warranty.



## Skytron 3600 UltraSlide

\$\$

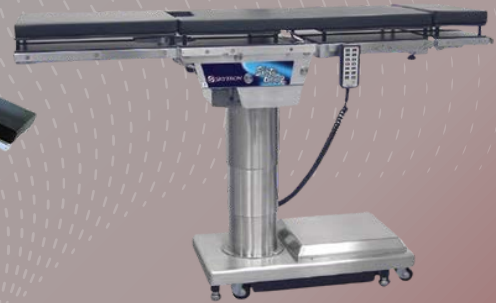
Modern Slide-top surgical table that can be used for a multitude of surgical procedures - great for multi-specialty ASC. 1,000 lbs weight capacity. Completely refurbished and comes with a new pad set and 6-month warranty.



## Skytron 3500 Slide

\$

Slide-top surgical table that is budget friendly. Great for urological or procedures where extra imaging space is needed.. 500 lbs weight capacity. Comes completely refurbished with a new pad set and 6-month warranty.



## Skytron 6002 Elite

\$

Much like its predecessor, the Skytron 6500, the 6002 is a budget-friendly surgical table, but with an increased weight capacity of 600 lbs. The patient surface also rotates 180° for increased imaging space. Comes completely refurbished with a new pad set and 6-month warranty.



**Scan or Click  
QR Code for  
more options  
and info!**



Call Us  
800-627-3215



Email Us  
[salesteam@venturemedical.com](mailto:salesteam@venturemedical.com)



# SURGICAL TABLE ACCESSORIES CATALOG



Best Quality



Best Value



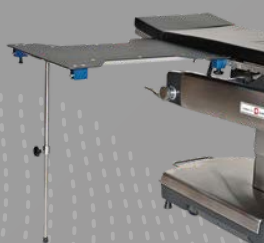
Warranty

**VENTURE**  
MEDICAL



## Stirrups and Leg Positioners

Large selection depending on needs and budget. Allen Yellofins, Allen PALS, Basic manual stirrups, and candy cane lithotomy stirrups. Comes completely refurbished with new pad set and 6-month warranty.



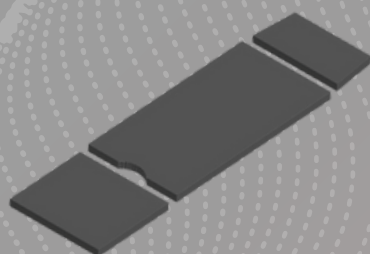
## Hand and Arm Surgery Tables

Refurbished and New Options available. Choose from leg or legless. Comes completely refurbished with new pad set and 6 month warranty. New options are subject to Mfg warranty.



## Armboards

Choose from standard drop-latch, bariatric, wide, height adjustable, and more. Replacement pads also available. Comes factory new with or without pads. Subject to Mfg warranty. Sold each.



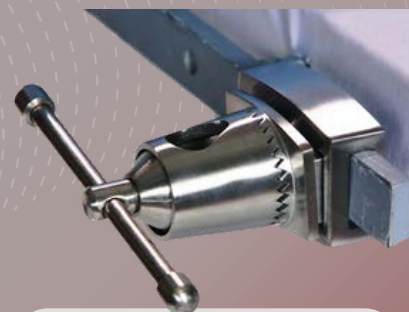
## Replacement Pads

From economy to deluxe, we have new pad sets available for most major brands of surgical tables. Steris, Skytron, Maquet, Stryker and more! Comes factory new with mfg warranty. Custom pads also available.



## Beach Chair Positioners

Refurbished options available from Allen Medical, OSI, Steris, and Skytron. Comes completely refurbished with new pad set and 6 month warranty. New options also available.



## Side Rail Sockets

Wide assortment of side rail sockets available, including Clark sockets and flat bar clamps. Economy, deluxe, and universal clamps. Comes factory new with mfg warranty.



**Scan or Click  
QR Code for  
more options  
and info!**



Call Us  
800-627-3215



Email Us  
[salesteam@venturemedical.com](mailto:salesteam@venturemedical.com)



# POWER EXAM TABLE CATALOG



Best Quality

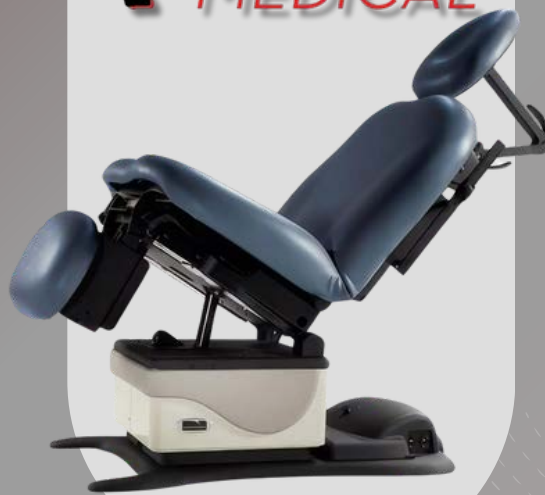


Best Value



Warranty

**VENTURE**  
MEDICAL



**Midmark 630**

\$\$\$

Modern universal procedure chair for a wide array of procedures. Low height (19") for easy entry/exit. Includes hand control. Comes completely refurbished with new upholstery set in your choice of color and 6-month warranty.



**Midmark 230**

\$\$

Modern procedure chair with a more budget-friendly price. Low height of 22.5". Includes hand control. Comes completely refurbished with new upholstery set in your choice of color and 6-month warranty.



**Midmark 75L**

\$

A familiar model to many, this procedure chair is budget friendly, but has all of the features you expect. Includes hand control. Comes completely refurbished with new upholstery set in your choice of color and 6-month warranty.



**Midmark 647 Podiatry**

\$\$

Modern podiatry chair with foot end mounted controls for the clinician's convenience. 450 lbs weight capacity. Completely refurbished with a new upholstery set in your choice of color and 6-month warranty.



**Midmark 222/223**

\$

Both models feature power height adjustment, with the 223 featuring a power backrest (222 has a manual gas-assist backrest). Low height of 18". Includes foot control. Comes completely refurbished with a new upholstery set in your choice of color and 6-month warranty.



**Midmark 625**

\$

Modern power exam table with a low height of 18" for easy entry/exit. Power height and backrest with a 650 lbs weight capacity. Includes hand control. Comes completely refurbished with a new upholstery set in your choice of color and 6-month warranty.



**Scan or Click  
QR Code for  
more options  
and info!**



Call Us  
**800-627-3215**



Email Us  
**[salesteam@venturemedical.com](mailto:salesteam@venturemedical.com)**

**Factory New**

# SURGICAL LIGHTS CATALOG



Best Quality



Best Value



Warranty

**VENTURE  
MEDICAL**



## Luvis L400 LED Major

\$\$\$

Ultra-Modern, sleek, laminar flow design. Major surgical light with 160,000 lux of light output. Great for large ASC with major surgery cases. Head-mounted controls. Optional wall control available. Choice of single, dual, or mobile configs. Comes factory new with a 2-year Mfg warranty.



## Luvis M310 LED Major

\$\$\$

Major surgical light with 160,000 lux of light output. Great for large ASC with major surgery cases. Head-mounted controls. Optional wall control available. Choice of single, dual, or mobile configs. Comes factory new with a 2-year Mfg warranty.



## Luvis S300 LED Surgical

\$\$

Excellent choice for a wide range of surgery settings, including general surgery, oral surgery, plastic surgery, and more. 130,000 lux, shadowless effects, and head-mounted controls. Choice of single, dual, or mobile configs. Comes factory new with a 2-year Mfg warranty.



## Luvis S200 LED Procedure

\$

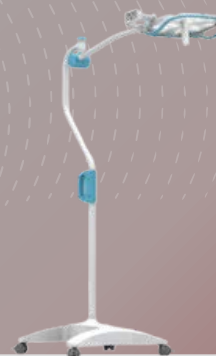
Perfect for minor procedure settings. 100,000 lux of light output head-mounted controls. Choice of single, dual, or mobile configs. Comes factory new with a 2-year Mfg warranty.



## Luvis S300 LED Mobile

\$\$

High intensity portable surgical light. Small footprint for mobile unit. 130,000 lux, selectable field size, 3 color temp modes. Head-mounted controls. Comes factory new with a 2-year Mfg warranty.



## Luvis S200 LED Mobile

\$

Small footprint with big intensity. 100,000 lux, focusable, cool light for a variety of exams and minor procedures. Head-mounted controls. Comes factory new with a 2-year Mfg warranty.



**Scan or Click  
QR Code for  
more options  
and info!**



Call Us  
800-627-3215



Email Us  
[salesteam@venturemedical.com](mailto:salesteam@venturemedical.com)



# STRETCHERS CATALOG



Best Quality



Best Value



Warranty



## Stryker Prime Series \$\$\$

Ultra-modern stretcher series which includes the model 1105 and 1115. 1115 model includes the "Big Wheel" feature. 700 lbs weight capacity. Comes completely refurbished with new pad set and 6-month warranty.



## Stryker M-Series \$\$

Modern looks with a less expensive price. The M-Series includes models 1005, 1007, and 1015. The 1015 includes the "Big Wheel" feature. 700 lbs weight capacity. Comes completely refurbished with new pad set and 6-month warranty.



## Hill-Rom Transtar \$\$

The Transtar line is a modern design with a reasonable price-point. 700 lbs weight capacity. We only refurbish the newer generations of the Transtar series. Comes completely refurbished with new pad set and 6-month warranty.



## Stryker 5050 \$\$

A popular choice for many facilities due to the small size and versatility offered. Lays flat as a stretcher and sits up in a chair position. 400 lbs weight capacity. Fold out footrest. Completely refurbished and comes with a new pad set and 6-month warranty.



## Stryker Transport Series \$

For basic transport and PACU needs, which includes models such as the 0735, 0737, 0738, 0747, and 0748. Budget-friendly. 500 lbs weight capacity. Many models/widths/styles to choose from. Comes completely refurbished with a new pad set and 6-month warranty.



## Hausted Horizon 462 \$

All the features you expect in a more budget-friendly stretcher. 500 lbs weight capacity. Side-rail styles vary (collapsible/fold under). Comes completely refurbished with a new pad set and 6-month warranty.



**Scan or Click  
QR Code for  
more options  
and info!**



Call Us  
800-627-3215



Email Us  
[salesteam@venturemedical.com](mailto:salesteam@venturemedical.com)



# Specialty STRETCHERS CATALOG



Best Quality



Best Value



Warranty

## VENTURE MEDICAL



### Stryker Eye Stretchers

Stryker eye stretcher models offered includes the 1069, 1079, 1089, and 5051. All include a dual articulating headrest. Comes completely refurbished with a new pad set and 6-month warranty.



### Stryker 1061 OB/GYN

Whether for exams, ultrasound, procedure, or emergency dept, the 1061 is a tried and true addition to any facility. Built-in heel stirrups and drop-down leg rest. Comes completely refurbished with a new pad set and 6-month warranty.



### Stryker 1080 C-Arm Stretcher

Boasting a large imaging area (27.5" x 66"), the 1080 is a great choice for C-arm imaging procedures. The patient's head can be placed at either end of the unit. Foot controls on each end. Comes completely refurbished with a new pad set and 6-month warranty.



### Hausted 429 VIC Chair

This video imaging chair is used for swallow studies. Radiolucent backrest. Includes a removable back plate for easy imaging access. Compact base for superior maneuverability. Completely refurbished and comes with a new pad set and 6-month warranty.



### Hausted ESC-Eye SurgiChair

Treatment, transport, and recovery in one solution. Includes articulating compact headrest for eye surgery, ENT procedures, etc. Battery operated and controlled by a wired hand control (included). Comes completely refurbished with a new pad set and a 6-month warranty.



### Pediatric Crib and Stretchers

Refurbished products include the Hausted 4160, Stryker FL19H/190, and the Midmark/Pedigo 500. Each model is unique in its features and advantages. Contact us for more details. Comes completely refurbished with a new pad set and 6-month warranty.



**Scan or Click  
QR Code for  
more options  
and info!**



Call Us  
800-627-3215



Email Us  
[salesteam@venturemedical.com](mailto:salesteam@venturemedical.com)

# WARMING CABINETS CATALOG



Best Quality



Best Value



Warranty

**VENTURE**  
MEDICAL



## Steris QDJ Full-Size \$\$\$

Warm fluids and blankets in this industry-standard full-size warming cabinet. Top and bottom compartment temps are independently controlled. Digital displays. Comes completely refurbished with a 6-month warranty.



## Getinge 5624 Full-Size \$\$

Full-size, but more compact, this dual-compartment unit is a good choice for limited space. Top and bottom compartment temps are independently controlled. Digital displays and controls. Comes completely refurbished with a 6-month warranty.



## Blickman 7921 Full-Size \$\$

Full-size, single-compartment blanket warmer with digital controls and display. Great choice for facilities that need a large amount of warmed blankets available. Comes completely refurbished with a 6-month warranty.



## Steris QDJ Tabletop \$\$

Industry-standard for tabletop warmers. Large capacity with time proven reliability. Digital display. Comes completely refurbished with a 6-month warranty.



## Getinge 5524 Tabletop \$\$

When height above the tabletop is a concern, the 5524 is a great choice with its low profile design, yet still maintaining a large capacity. Digitals control and display. Comes completely refurbished with a 6-month warranty.



## Pedigo 2010S Tabletop \$

Does less equal more? Our most compact offering, this unit is small and lightweight. Manual controls and analog temperature gauge. Comes completely refurbished with a 6-month warranty.



**Scan or Click  
QR Code for  
more options  
and info!**



Call Us  
800-627-3215



Email Us  
[salesteam@venturemedical.com](mailto:salesteam@venturemedical.com)



# ANESTHESIA CATALOG



Best Quality



Best Value



Warranty

**GE Aespire 7900****\$\$**

Modern unit that includes the proven and often requested GE 7900 ventilator with PSVPro. Vaporizers and supply hoses are sold separately. Contact us for refurbishing details. Comes completely refurbished with a 6-month warranty.

**GE Aespire View****\$\$\$**

Modern, compact, and durable. Includes 12" ventilator display and Smartvent 7900 ventilator. Vaporizers and supply hoses sold separately. Contact us for refurbishing details. Comes completely refurbished with a 6-month warranty.

**Drager Fabius GS****\$\$**

Modern design that includes the Drager E-vent ventilator which is electronically controlled with pressure control and support. Also includes Cozy absorber. Contact us for refurbishing details. Comes completely refurbished with a 6-month warranty.

**Mindray DPM6/7****\$\$**

Modern solution with modular design. Includes MPM module for normal parameters and an AGM module for Co2 and 5-agent ID. DPM6 has a 12.1" display, while the DPM7 (shown) has a large 17" display. Comes completely refurbished with a 6-month warranty.

**GE Carescape B650****\$\$\$**

Compact and flexible anesthesia monitors by a name you trust. All-in-one solution with touchscreen, all the normal parameters + Co2 and 5-Agent with Auto-ID. Comes completely refurbished with a 6-month warranty.

**Mindray Passport V****\$**

Budget-friendly anesthesia gas monitor combo. Includes the Mindray Passport V coupled with a Mindray Gas Module. All normal parameters and Co2 and 5-agent with ID. Comes completely refurbished with a 6-month warranty.



**Scan or Click  
QR Code for  
more options  
and info!**



**Call Us**  
**800-627-3215**



**Email Us**  
**[salesteam@venturemedical.com](mailto:salesteam@venturemedical.com)**



# PATIENT MONITORS CATALOG



Best Quality



Best Value



Warranty

**VENTURE**  
MEDICAL



**Mindray Passport V**

\$

Budget conscious choice for a full parameter patient monitor. ECG, SpO2, NIBP and Printer. 12.1" display. Available with sidestream Co2. Comes completely refurbished with a 6-month warranty.



**Mindray DPM 6/7**

\$\$

Modern solution with modular design. Includes MPM module for ECG, SpO2, and NIBP. Built-in printer. DPM6 (shown) has a 12.1" display, while the DPM7 has a large 17" display. Co2 options available. Comes completely refurbished with a 6-month warranty.



**Mindray Passport 8/12**

\$\$\$

Ultra-modern patient monitor features ECG, SpO2, and NIBP. Built-in printer. Passport 8 has an 8" display, while the Passport 12 has a 12.1" display. Co2 options available (modular). Comes completely refurbished with a 6-month warranty.



**Welch Allyn Spot LXi**

\$\$

A customer favorite, a compact and user-friendly vital signs monitor featuring NIBP, SpO2, and oral temp (optional). Comes completely refurbished with a 6-month warranty.



**Welch Allyn 6000 Series**

\$\$

Modern design with user-friendly touchscreen display. features NIBP, SpO2, and oral temp (optional). Optional onboard printer available. Comes completely refurbished with a 6-month warranty.



**GE Dinamap V100**

\$

Budget-friendly vital signs monitor that features NIBP, SpO2, and oral temp (optional). Built-in pole mount. Optional onboard printer available. Comes completely refurbished with a 6-month warranty.



**Scan or Click  
QR Code for  
more options  
and info!**



Call Us  
800-627-3215



Email Us  
[salesteam@venturemedical.com](mailto:salesteam@venturemedical.com)

# ELECTROSURGICAL CATALOG



Best Quality



Best Value



Warranty

**Conmed System 2450**

\$

Trusted technology with a simple, easy-to-use interface. Features cut, coag, and bipolar modes. Dynamic response technology for less tissue damage. Includes monopolar footswitch. Comes completely refurbished with a 6-month warranty.

**Conmed System 5000**

\$\$

Programmable ESU with a variety of modes. Features cut (3 modes), coag (4 modes), and bipolar (2 modes). Dynamic response technology for less tissue damage. 9 memory settings. Includes monopolar footswitch. Comes completely refurbished with a 6-month warranty.

**Valleylab Force FXc**

\$\$\$

The ESU that set the standard, the Force FX is still one of the most requested units in our lineup. Features 3 cut modes, 4 coag modes, and bipolar mode. Includes monopolar footswitch. Comes completely refurbished with a 6-month warranty.

**Valleylab Force TRIAD**

\$\$\$\$

Revolutionary single solution for both electrosurgery and a vessel sealer (Ligasure). Touchscreen LCD displays. 5 Modes: Cut, Coag, Valleylab mode, Bipolar, and Ligasure. Includes Monopolar and Ligasure footswitch. Comes completely refurbished with a 6-month warranty.

**Smoke Evacuators**

\$

Refurbished smoke evacuator units from known brands that are compatible with most models. Comes with new filter, footswitch. Completely refurbished with a 6-month warranty.

**ESU Carts and Footswitches**

Refurbished carts and footswitches are available for most Valleylab and Conmed electrosurgical units. Comes completely refurbished with a 6-month warranty.



**Scan or Click  
QR Code for  
more options  
and info!**



Call Us  
**800-627-3215**



Email Us  
**[salesteam@venturemedical.com](mailto:salesteam@venturemedical.com)**



# INFUSION PUMPS CATALOG



Best Quality



Best Value



Warranty

**Medfusion 3500****\$\$**

Our best-selling syringe pump. The 3500 is a user-friendly, easy-to-use solution for precise medication delivery. Uses a variety of syringes from 1mL to 60mL. Infusion rates as low as 0.01mL/hr. Includes pole clamp. Comes completely refurbished with a 6-month warranty.

**Braun Perfusor Space****\$\$**

Compact and lightweight, this syringe pump is user-friendly and easy to use. Includes pole clamp and AC adapter. Comes completely refurbished with a 6-month warranty.

**Hospira Plum 360****\$**

Advanced infusion pump with safety features designed to reduce errors. Suited for a wide range of med/surg applications. Cassette-based pump with the ability to infuse two separate therapies. Includes pole clamp. Comes completely refurbished with a 6-month warranty.

**Alaris Medley 8015/8100****\$\$**

If versatility is needed, the Alaris Medley system is an excellent choice. Its basis is the 8015 controller...now just add modules. Highly expandable, this system can utilize multiple infusion pumps, syringe pumps, and even SpO2 and Co2 modules. Includes pole clamp. Comes completely refurbished with a 6-month warranty.

**Braun Vista Basic****\$**

High reliability that is easy to load, program, and use. Uses economical straight gravity lines. Includes Pole Clamp. Comes completely refurbished with a 6-month warranty.

**Baxter Sigma Spectrum****\$**

This compact infusion pump weighs less than 2 lbs, but delivers just like the larger pumps. Uses standard Baxter IV sets. Includes pole clamp and AC adapter. Comes completely refurbished with a 6-month warranty.



**Scan or Click  
QR Code for  
more options  
and info!**



Call Us  
**800-627-3215**



Email Us  
**[salesteam@venturemedical.com](mailto:salesteam@venturemedical.com)**



# EKG/CARDIOLOGY CATALOG



Best Quality



Best Value



Warranty

**Mortara ELI-250c**

\$

Cost-effective option for a full-page 12 lead diagnostic EKG machine with interpretation and a preview screen. Includes new 12 lead EKG cable (banana) and tab electrode clips. Comes completely refurbished with a 6-month warranty.

**Mortara ELI-280**

\$

Great for a high volume EKGs. Large 10.1" touchscreen display with 13 seconds of capture. 12 lead EKG with interpretation and full-page printout. Includes acquisition module and tab electrode clips. Comes completely refurbished with a 6-month warranty.

**GE MAC 1600**

\$\$\$

One of the most advanced EKG units on the market. Comes with 12SL analysis, leading to better treatment choices. Large preview screen with full-page printout. Includes 12 lead cable and tab electrode clips. Comes completely refurbished with a 6-month warranty.

**GE MAC 5500**

\$

Hospital grade, high-end EKG system with advanced ECG analysis programs, including 12SL. 12 or 15 lead capable. Full-page report with interpretation. Includes Cam 14 acquisition module. Comes completely refurbished with a 6-month warranty.

**GE MAC 2000**

\$

Ultra-Modern solution for full-page, 12-lead EKG with interpretation and a preview screen. Includes 12 lead EKG cable (banana) and tab electrode clips. Comes completely refurbished with a 6-month warranty.

**GE Case Stress Test**

\$\$\$

The industry standard in stress testing. Software version 6.5v or newer and includes Cam 14 acquisition module and GE T2100 treadmill. Note: treadmill is 220 volts. Comes completely refurbished with a 6-month warranty.



**Scan or Click  
QR Code for  
more options  
and info!**



**Call Us**  
**800-627-3215**



**Email Us**  
**[salesteam@venturemedical.com](mailto:salesteam@venturemedical.com)**

# DEFIBRILLATORS CATALOG



Best Quality



Best Value



Warranty

## VENTURE MEDICAL



### Zoll R Series Plus

\$\$\$

Most economical defibrillator we offer. Features manual defibrillation, AED, and pacing. Includes hands-free 'quick-combo' cable and adult pad set. FDA Approved. Comes completely refurbished with a 6-month warranty.



### Medtronic Lifepak 20e

\$\$

Modern, full-featured defibrillator with AED, manual defibrillation, and pacing. Includes hands-free 'quick-combo' cable and adult pad set. FDA Approved. Comes completely refurbished with a 6-month warranty.



### Zoll R Series ALS

\$\$

Ultra-modern, full-featured defibrillator with many optional upgrades. Standard unit features AED, manual defibrillation, and AED. Includes hands-free cable and adult pads. FDA Approved. Comes completely refurbished with a 6-month warranty.



### PowerHeart G3 AED

Economical and Easy-to-use AED with both automatic and semi-automatic models available. Includes new battery and adult pad set. FDA approved. Comes completely refurbished with a 6-month warranty.



### Crash Carts

From trusted manufacturers such as Waterloo, Harloff, and Armstrong. Includes O2 tank holder, IV Pole, half backboard, and break-away lock system. Comes completely refurbished with a 6-month warranty.



### Portable Aspirators

Refurbished units from Sscor, Ohio, and Gomco/Allied. Battery operated (AC/DC). Includes Canister and filter. Comes completely refurbished with a 6-month warranty.



**Scan or Click  
QR Code for  
more options  
and info!**



Call Us  
800-627-3215



Email Us  
[salesteam@venturemedical.com](mailto:salesteam@venturemedical.com)



# MISCELLANEOUS CATALOG



Best Quality



Best Value



Warranty



## Kendall SCD 700

Compact, lightweight, and ultra-reliable. The 700 series is a great choice for clients needing an SCD for their facility. Includes hose-sets and 2 leggings (type based on availability). Comes completely refurbished with a 6-month warranty.



## Bair Hugger Warmers

Popular models include the model 675, 750 and, 775 (shown). Digital display with multiple temp and fan speed settings. Includes hose. Comes completely refurbished with a 6-month warranty.



## Zimmer Tourniquets

Models offered include the Zimmer ATS-1200, ATS-2000, ATS-2200, ATS-3000, and the ATS-4000. Includes new hose sets. Mobile stands also available. Comes completely refurbished with a 6-month warranty.



## Stryker Cast Saw Systems

System includes the Stryker 940 cast saw and the 986 CastVac. Includes new blade, blade guard, and filter. Completely refurbished with a 6-month warranty.



## Steris Scrub Sinks

Single (shown), Double, or even Triple. We provide Steris Flexmatic series scrub sinks. Choose from standard knee operated or the hands-free infrared option. Comes completely refurbished with a 6-month warranty.



## Wallach Zoomscope

Old faithful, the Wallach Zoomscope may be the most-sold colposcope of all time. Zoomscope with TruLight units also available (newer gen). Comes completely refurbished with a 6-month warranty.



**Scan or Click  
QR Code for  
more options  
and info!**



Call Us  
800-627-3215



Email Us  
[salesteam@venturemedical.com](mailto:salesteam@venturemedical.com)



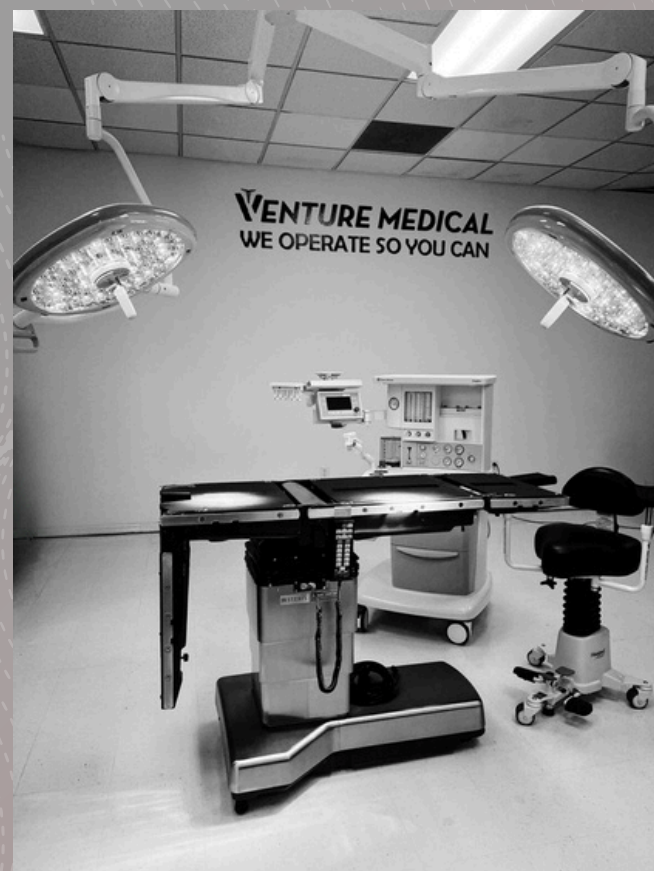


# WE HAVE SO MUCH MORE!

This catalog is a sample of our most popular items.  
We carry hundreds of items, so reach out to us with  
your needs. We are always here to help!



- Stretchers
- Surgical Tables
- Surgical Lights
- Anesthesia Machines
- Patient Monitors
- Electrosurgical Units
- Power Exam Chairs
- Warming Cabinets
- Imaging Tables
- Patient Warmers
- Pediatric Cribs
- Defibrillators
- EKG Machines
- Infusion Pumps
- Autoclaves
- Crash Carts
- Aspirators
- Scrub Sinks
- Stainless Steel
- Tourniquets
- Colposcopes
- SCDs



**Contact us for options, availability,  
lead-times and shipping quotes**



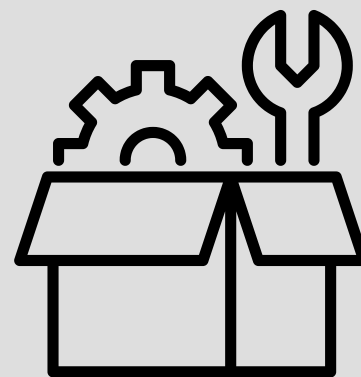
Call Us  
800-627-3215



Email Us  
[salesteam@venturemedical.com](mailto:salesteam@venturemedical.com)

# PARTS AND SERVICE

Venture Medical can provide parts for your equipment repairs and maintenance. In Central Florida, our biomedical service department can test, repair and maintain your equipment and provide required documentation for inspections.



## Stretcher Parts

Whether its a current model stretcher or an older model, we can help you find the parts you need for your stretcher in most cases. Hydraulic cylinder, brake cam, wheel, or any other parts, we are here to help you. New and preowned parts available.



## Surgical Table Parts

Need a caster, brake, or knob for your surgical table? Maybe you need a power supply or a hydraulic cylinder. We can help with these parts and more for your surgical table. Focusing on Steris and Skytron models. New and preowned.



## Hand Controls

Hand control for surgical tables, procedure tables, and power exam tables. Focusing on Steris, Skytron, and Midmark tables, we can help with many models across these manufacturer's equipment models.



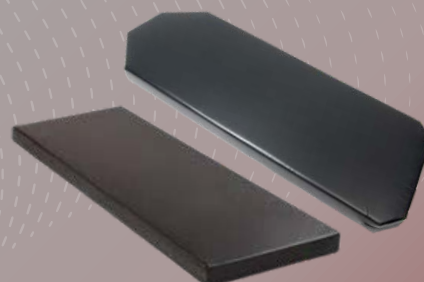
## Monitor Accessories

We carry cables, sensors, cuffs, and paper for virtually all brands and models of patient monitors. We know that a simple cable replacement can cause delays in your daily patient schedule, so we aim to ship fast!



## Batteries

Battery replacements for virtually any medical device needed. From the smallest coin cell battery to large surgical table batteries, we can supply you with whatever you need.



## Stretcher and Custom Pads

Replacement stretcher pads are necessary for a plethora of reasons, and we make it simple. We carry a vast array of pads for Stryker, Hill Rom, Hausted, as well as many other brands. Have a hard to find pad? No problem, we can also provide custom pads to your specifications!

**Contact us today for your parts and accessory needs!**



Call Us  
800-627-3215



Email Us  
[salesteam@venturemedical.com](mailto:salesteam@venturemedical.com)



# ABOUT US

Since 1999, Venture Medical has been supplying the highest quality new and refurbished medical equipment in the industry. We value our clients and know that they and their patients are the reason we are in business. All refurbished equipment is placed through a rigorous process to ensure you receive the best quality in the industry. After the sale, you can count on us to be there to support you if a problem arises.



Large Inventory



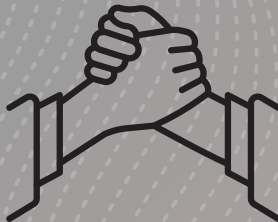
Knowledgeable Sales Reps



Fast Quotes



Service Support



Valued Partnerships



Warranty



All refurbishing work is done in-house and certified by our biomedical equipment service department, including electrical safety testing on electrical products. We want you to rest easy knowing that your equipment will look and work the way you would expect from a professional refurbished medical equipment supplier.

We look forward to working with you. See why we are different. Contact us today!



Call Us  
800-627-3215



Email Us  
[salesteam@venturemedical.com](mailto:salesteam@venturemedical.com)

# NOTES

---





SCAN ME



WE OPERATE SO YOU CAN<sup>®</sup>

800-627-3215

[www.venturemedical.com](http://www.venturemedical.com)