

# NEW! WIRE CARTS

## SLANTED SHELF SUTURE CARTS

Slanted Shelf Suture Carts feature four adjustable gravity-feed design shelves for easy visibility and accessibility of product. Includes eight zinc dividers for extra organization. 5" casters provide easy mobility of inventory. Choice of four different shelf sizes and two heights.

*Optional Shelf Bins sold separately (see page 3).*

MODEL	DIMENSIONS
R183654SSC	18 x 36 x 60
R183663SSC	18 x 36 x 69
R184854SSC	18 x 48 x 60
R184863SSC	18 x 48 x 69

MODEL	DIMENSIONS
R243654SSC	24 x 36 x 60
R243663SSC	24 x 36 x 69
R244854SSC	24 x 48 x 60
R244863SSC	24 x 48 x 69



## CATHETER PROCEDURE CARTS

Catheter Procedure Carts include 21 catheter hooks to hold all styles and sizes of catheter packages. Easily adjustable for multiple configurations. Includes plastic bin markers for easy identification and overall organization. Used in central supply, OR, ER and other areas of the healthcare facility.

*Optional Shelf Bins sold separately (see page 3).*

MODEL	DIMENSIONS
R244860CPC	24 x 48 x 69
R246060CPC	24 x 60 x 69



## CATHETER PROCEDURE CARTS WITH BINS

Catheter procedure carts are available in two heights with either seven or nine shelves. Economical color-coded bins include markers for easy identification. 5" casters provide easy mobility of inventory.



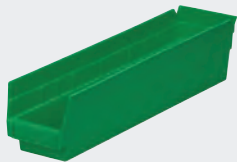
MODEL	DIMENSIONS	NO. OF SHELVES	NO. OF BINS	BIN COLOR
R244863CPBC-R	24 x 48 x 69	7	60	Red
R244863CPBC-Y	24 x 48 x 69	7	60	Yellow
R244863CPBC-B	24 x 48 x 69	7	60	Blue
R244863CPBC-G	24 x 48 x 69	7	60	Green
R244863CPBC-C	24 x 48 x 69	7	60	Clear
R244863CPBC-W	24 x 48 x 69	7	60	White

MODEL	DIMENSIONS	NO. OF SHELVES	NO. OF BINS	BIN COLOR
R244872CPBC-R	24 x 48 x 78	9	84	Red
R244872CPBC-Y	24 x 48 x 78	9	84	Yellow
R244872CPBC-B	24 x 48 x 78	9	84	Blue
R244872CPBC-G	24 x 48 x 78	9	84	Green
R244872CPBC-C	24 x 48 x 78	9	84	Clear
R244872CPBC-W	24 x 48 x 78	9	84	White

## OPTIONAL SHELF BINS

Bins work with any wire shelving. Sold in quantities of 12.

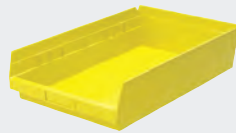
MODEL	OUTER DIMENSIONS	INNER DIMENSIONS	COLOR
BIN18-3R	17 7/8 x 4 1/8 x 4	16 1/2 x 3 x 4	Red
BIN18-3B	17 7/8 x 4 1/8 x 4	16 1/2 x 3 x 4	Blue
BIN18-3G	17 7/8 x 4 1/8 x 4	16 1/2 x 3 x 4	Green
BIN18-3Y	17 7/8 x 4 1/8 x 4	16 1/2 x 3 x 4	Yellow
BIN18-3W	17 7/8 x 4 1/8 x 4	16 1/2 x 3 x 4	White
BIN18-3C	17 7/8 x 4 1/8 x 4	16 1/2 x 3 x 4	Clear
MODEL	OUTER DIMENSIONS	INNER DIMENSIONS	COLOR
BIN18-5R	17 7/8 x 6 5/8 x 4	16 1/2 x 5 1/2 x 4	Red
BIN18-5B	17 7/8 x 6 5/8 x 4	16 1/2 x 5 1/2 x 4	Blue
BIN18-5G	17 7/8 x 6 5/8 x 4	16 1/2 x 5 1/2 x 4	Green
BIN18-5Y	17 7/8 x 6 5/8 x 4	16 1/2 x 5 1/2 x 4	Yellow
BIN18-5W	17 7/8 x 6 5/8 x 4	16 1/2 x 5 1/2 x 4	White
BIN18-5C	17 7/8 x 6 5/8 x 4	16 1/2 x 5 1/2 x 4	Clear
MODEL	OUTER DIMENSIONS	INNER DIMENSIONS	COLOR
BIN18-7R	17 7/8 x 8 3/8 x 4	16 1/2 x 7 1/8 x 4	Red
BIN18-7B	17 7/8 x 8 3/8 x 4	16 1/2 x 7 1/8 x 4	Blue
BIN18-7G	17 7/8 x 8 3/8 x 4	16 1/2 x 7 1/8 x 4	Green
BIN18-7Y	17 7/8 x 8 3/8 x 4	16 1/2 x 7 1/8 x 4	Yellow
BIN18-7W	17 7/8 x 8 3/8 x 4	16 1/2 x 7 1/8 x 4	White
BIN18-7C	17 7/8 x 8 3/8 x 4	16 1/2 x 7 1/8 x 4	Clear
MODEL	OUTER DIMENSIONS	INNER DIMENSIONS	COLOR
BIN18-10R	17 7/8 x 11 1/8 x 4	16 1/2 x 10 x 4	Red
BIN18-10B	17 7/8 x 11 1/8 x 4	16 1/2 x 10 x 4	Blue
BIN18-10G	17 7/8 x 11 1/8 x 4	16 1/2 x 10 x 4	Green
BIN18-10Y	17 7/8 x 11 1/8 x 4	16 1/2 x 10 x 4	Yellow
BIN18-10W	17 7/8 x 11 1/8 x 4	16 1/2 x 10 x 4	White
BIN18-10C	17 7/8 x 11 1/8 x 4	16 1/2 x 10 x 4	Clear



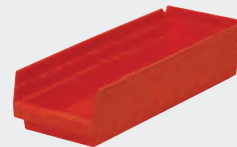
BIN18-3G



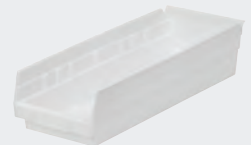
BIN18-3B



BIN18-10Y



BIN18-5R



BIN18-5W

## EARTH SAVER BINS

Sold in quantities of 12.

MODEL	OUTER DIMENSIONS	INNER DIMENSIONS	COLOR
ESBIN18-3SS	17 7/8 x 4 1/8 x 4	16 1/2 x 3 x 4	Sandstone
ESBIN18-3TC	17 7/8 x 4 1/8 x 4	16 1/2 x 3 x 4	Terra Cotta
ESBIN18-3HG	17 7/8 x 4 1/8 x 4	16 1/2 x 3 x 4	Hunter Green
ESBIN18-5SS	17 7/8 x 6 5/8 x 4	16 1/2 x 5 1/2 x 4	Sandstone
ESBIN18-5TC	17 7/8 x 6 5/8 x 4	16 1/2 x 5 1/2 x 4	Terra Cotta
ESBIN18-5HG	17 7/8 x 6 5/8 x 4	16 1/2 x 5 1/2 x 4	Hunter Green



ESBIN-18-3HG



ESBIN-18-3TC



ESBIN-18-5SS

## BIN DIVIDERS

Sold in quantities of 24.

MODEL	DESCRIPTION
BINDIV-3	3" Dividers
BINDIV-5	5 1/2" Dividers
BINDIV-7	7 1/8" Dividers
BINDIV-10	10" Dividers

## STERILE WRAP RACKS

Adjustable hang bars keep sterile wraps separated and easily accessible. Bottom wire shelf allows for additional product to be stored and readily available. 5" casters for easy mobility.

MODEL	DIMENSIONS
R1860SWR	18 x 60 x 66
R2448SWR	24 x 48 x 69
R2460SWR	24 x 60 x 69



R1860SWR



R2448SWR

## BIN STACKERS

Bin stackers feature three heights with adjustable slides to accommodate multiple color coded bins. Safe storage with easy mobility. Additional accessories include bin lids, bin dividers, label holders and additional bins.



R212439DBC-4B

MODEL	DIMENSIONS	NO. OF BINS*	BIN COLOR
R212439DBC-4B	21 x 24 x 45	4	Blue
R212439DBC-4R	21 x 24 x 45	4	Red
R212439DBC-4G	21 x 24 x 45	4	Gray
R212454DBC-7B	21 x 24 x 60	7	Blue
R212454DBC-7R	21 x 24 x 60	7	Red
R212454DBC-7G	21 x 24 x 60	7	Gray
R212468DBC-7B	21 x 24 x 74	7	Blue
R212468DBC-7R	21 x 24 x 74	7	Red
R212468DBC-7G	21 x 24 x 74	7	Gray
R212468DBC-11B	21 x 24 x 74	11	Blue
R212468DBC-11R	21 x 24 x 74	11	Red
R212468DBC-11G	21 x 24 x 74	11	Gray

\* All bins are 6" in size

### BIN STACKERS ACCESSORIES

(additional cost)

MODEL	DESCRIPTION	BIN COLOR
DIVBIN22-3B	Extra 3" Bin for Bin Stackers	Blue
DIVBIN22-3R	Extra 3" Bin for Bin Stackers	Red
DIVBIN22-3G	Extra 3" Bin for Bin Stackers	Gray
DIVVIN22-6B	Extra 6" Bin for Bin Stackers	Blue
DIVVIN22-6R	Extra 6" Bin for Bin Stackers	Red
DIVVIN22-6G	Extra 6" Bin for Bin Stackers	Gray
DBD3L	Bin Dividers (qty. 6)	Black
DBD3S	Bin Dividers (qty. 6)	Black
DBD6L	Bin Dividers (qty. 6)	Black
DBD6S	Bin Dividers (qty. 6)	Black
DBLID	Bin Lid (qty. 3)	Clear
DBLH	Bin Label Holder (qty. 6)	Clear



MOBILE TRANSPORT & STORAGE  
SOLUTIONS FOR HEALTHCARE™

#### LAKESIDE MANUFACTURING, INC.

4900 West Electric Ave.  
West Milwaukee, WI 53219  
U.S.A.

Toll Free: (800) 558-8565

Phone: (414) 902-6400

Fax: (414) 902-6446

e-mail: [info@eLakesideHealthcare.com](mailto:info@eLakesideHealthcare.com)

web: [www.eLakesideHealthcare.com](http://www.eLakesideHealthcare.com)