

Stain resistant and liquid repellent

SHIELD BY PANAZ[®] FABRICS

Our obsessive search for superior protective material brought us to Shield by Panaz[®] fabrics. Utilizing silane-based technology, Shield by Panaz[®] fabrics have been tested and proven to be permanently antimicrobial* to inhibit the growth of mold and mildew. Additionally, these fabrics repel liquids and are highly resistant to most stains. These properties make them ideal for cubicle curtains, shower curtains and window treatments.

**When laundered per manufacturer's instructions.*





STAIN
RESISTANT



LIQUID
REPELLENT



ANTIMICROBIAL
PROPERTIES




shield[™]Classic
protective intelligent fabric
by *Panaz[®]*

CUBICLE CURTAINS + TRACK

NEW! FOLLOW ME

Width: 72" (182.88cm) fabric

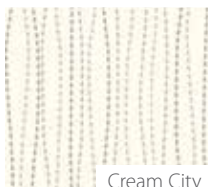
Repeat: 12.6" (32cm) H x 12.1" (30.66cm) V

Shown: Vertically Seamed

Non-woven: 100% flame retardant polyester modified with nano-molecular, anti-bacterial and water repellent technologies



Blue Yonder



Cream City



Cyber Yellow



French Toast



Oyster



Spring

NEW! FRAMEWORK

Width: 72" (182.88cm) fabric

Repeat: 12.6" (32cm) H x 12.1" (30.66cm) V

Shown: Railroaded

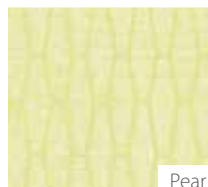
Non-woven: 100% flame retardant polyester modified with nano-molecular, anti-bacterial and water repellent technologies



Khaki



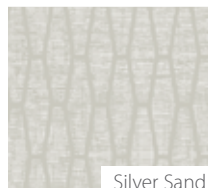
Limoncello



Pear



Platinum



Silver Sand

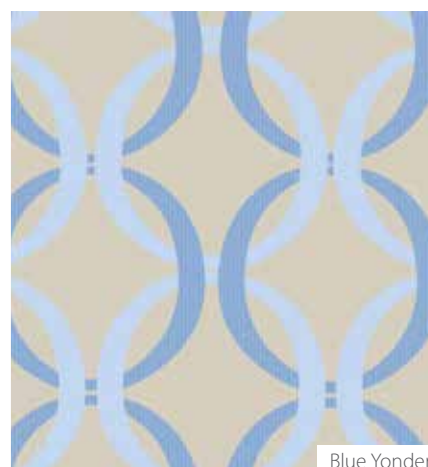
NEW! FULL CIRCLE

Width: 72" (182.88cm) fabric

Repeat: 12.6" (32cm) H x 12.2" (30.99cm) V

Shown: Railroaded

Non-woven: 100% flame retardant polyester modified with nano-molecular, anti-bacterial and water repellent technologies



Blue Yonder



Cream City



Cyber Yellow



French Toast



Oyster



Spring

ABLOOM

Width: 72" (182.88cm) fabric

Repeat: 25.2" (64cm) H x 24.15" (61.34cm) V

Shown: Railroaded

Non-Woven: 100% flame retardant polyester modified with molecular antimicrobial and liquid repellent technologies.



Waterscape



Stone



Auburn



Eucalyptus



Bamboo



Pistachio

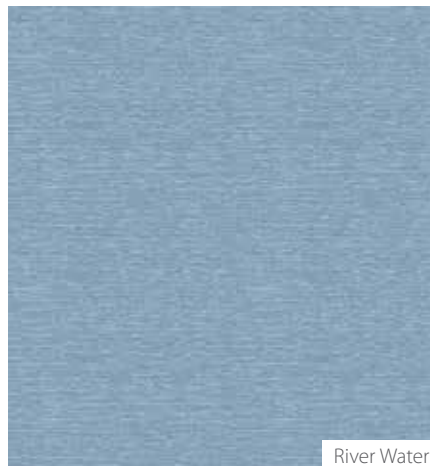
ALOFT

Width: 72" (182.88cm) fabric

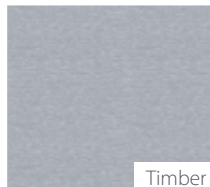
Repeat: 0" (0cm) H x 0" (0cm) V

Shown: Railroaded

Non-Woven: 100% flame retardant polyester modified with molecular antimicrobial and liquid repellent technologies.



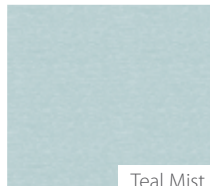
River Water



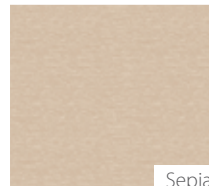
Timber



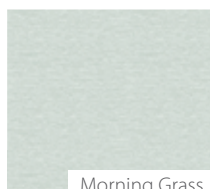
Butternut



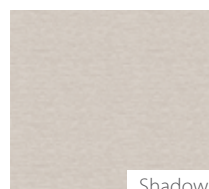
Teal Mist



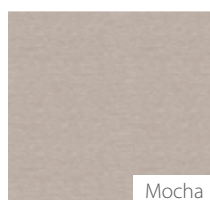
Sepia



Morning Grass



Shadow



Mocha

ARRAY

Width: 72" (182.88cm) fabric

Repeat: 25.2" (64cm) H x 24.15" (61.34cm) V

Shown: Railroaded

Non-Woven: 100% flame retardant polyester modified with molecular antimicrobial and liquid repellent technologies.



Waterscape



Stone



Auburn



Eucalyptus



Bamboo



Pistachio

BRISTOL

Width: 57" (145cm) fabric

Repeat: 25.2" (64cm) H

Shown: Vertically Seamed

Non-Woven: 100% flame retardant polyester modified with molecular antimicrobial and liquid repellent technologies.



Meadow



Sunrise



Merlot



Vista



Island

BRUSHSTROKE

Width: 72" (182.88cm) fabric

Repeat: 25.2" (64cm) H x

72" (182.88cm) V

Shown: Railroaded

Non-Woven: 100% flame retardant polyester modified with molecular antimicrobial and liquid repellent technologies.



Nectar



Aloe



Pewter



Lilac

BUBBLES

Width: 72" (182.88cm) fabric

Repeat: 25.2" (64cm) H x

72" (182.88cm) V

Shown: Railroaded

Non-Woven: 100% flame retardant polyester modified with molecular antimicrobial and liquid repellent technologies.



Pastel



Primary

CANOPY

Width: 72" (182.88cm) fabric

Repeat: 27.2" (69.1cm) H x
72" (182.88cm) V

Shown: Railroaded

Non-Woven: 100% flame retardant polyester
modified with molecular antimicrobial and liquid
repellent technologies.



Jungle



Breeze



Earth



Sunlight



Eclipse



Rain

CHELSEA

Width: 57" (145cm) fabric

Repeat: 26.2" (66.55cm) H x 25.2" (64cm) V

Shown: Vertically Seamed

Non-Woven: 100% flame retardant polyester
modified with molecular antimicrobial and
liquid repellent technologies.



Iris



Grain



Royal

DORCHESTER

Width: 57" (145cm) fabric

Repeat: 13.58" (34.49cm) H

Shown: Vertically Seamed

Non-Woven: 100% flame retardant polyester
modified with molecular antimicrobial and
liquid repellent technologies.



Beach Glass



Sterling



Mocassin



Sonora

ELEGANT LEAF

Width: 54" (137.16cm) fabric

Repeat: 26.2" (66.55cm) H x 25.2" (64cm) V

Shown: Vertically Seamed

Non-Woven: 100% flame retardant polyester modified with molecular antimicrobial and liquid repellent technologies.



Rich Ivory



Basil



Point Blue

FUSION

Width: 57" (145cm) fabric

Repeat: 8.9" (22.61cm) H x 8.4" (21.32) V

Shown: Vertically Seamed

Non-Woven: 100% flame retardant polyester modified with molecular antimicrobial and liquid repellent technologies.



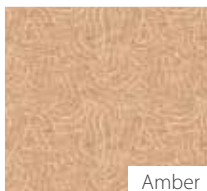
Fountain



Cloud



Truffle



Amber

GENTRY

Width: 57" (145cm) fabric

Repeat: 13.46" (34.19cm) H x 12.59" (31.98cm) V

Shown: Vertically Seamed

Non-Woven: 100% flame retardant polyester modified with molecular antimicrobial and liquid repellent technologies.



Sonora



Ocean

INSPIRE

Width: 72" (182.88cm) fabric

Repeat: 25" (63.5cm)H x
72" (182.88cm)V

Shown: Railroaded

Non-Woven: 100% flame retardant polyester
modified with molecular antimicrobial and
liquid repellent technologies.



Coast



Seaglass



Shell



Beach

KENSINGTON

Width: 57" (145cm) fabric

Repeat: 6.3" (16cm) V

Shown: Vertically Seamed

Non-Woven: 100% flame retardant polyester
modified with molecular antimicrobial and
liquid repellent technologies.



Sand



Natural



Toffee



Serenity



Sapphire

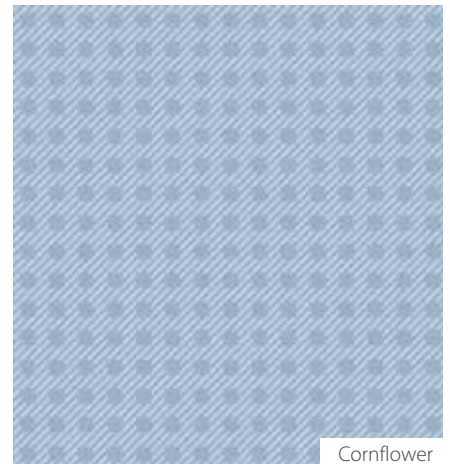
LANCASTER

Width: 54" (137.16cm) fabric

Repeat: 1" (2.54cm) H x 1" (2.54cm) V

Shown: Vertically Seamed

Non-Woven: 100% flame retardant polyester
modified with molecular antimicrobial and
liquid repellent technologies.



Cornflower



Cream



Downy



Bayleaf



Ash Cloud



Lilac

LEA

Width: 72" (182.88cm) fabric

Repeat: 25.2" (64cm) H x 72" (182.88cm) V

Shown: Railroaded

Non-Woven: 100% flame retardant polyester modified with molecular antimicrobial and liquid repellent technologies.



Harvest



Strawberry



Wheat



Meadow

MAYFAIR

Width: 57" (145cm) fabric

Repeat: 26.25" (66.68cm) H x 25.2" (64cm) V

Shown: Vertically Seamed

Non-Woven: 100% flame retardant polyester modified with molecular antimicrobial and liquid repellent technologies.



Alpine



Autumn



Denim



Cocoa

NOTTINGHAM

Width: 57" (145cm) fabric

Repeat: 8.97" (22.78cm) H x 8.26" (20.98cm) V

Shown: Vertically Seamed

Non-Woven: 100% flame retardant polyester modified with molecular antimicrobial and liquid repellent technologies.



Green Tea



Biscotti



Palomino



Plum

OVATION

Width: 72" (182.88cm) fabric

Repeat: 14" (35.56cm) H x
25" (63.5cm) V

Shown: Railroaded

Non-Woven: 100% flame retardant polyester
modified with molecular antimicrobial and
liquid repellent technologies.



Azure



Almond



Toast



Pear

RAPIDS

Width: 72" (182.88cm) fabric

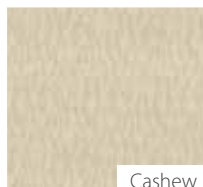
Repeat: 25.2" (64cm) H x 72" (182.88cm) V

Shown: Railroaded

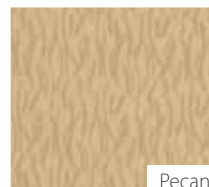
Non-Woven: 100% flame retardant polyester
modified with molecular antimicrobial and
liquid repellent technologies.



Lagoon



Cashew



Pecan



Rust

RIPPLE

Width: 72" (182.88cm) fabric

Repeat: 25.2" (64cm) H x 72" (182.88cm) V

Shown: Railroaded

Non-Woven: 100% flame retardant polyester
modified with molecular antimicrobial and
liquid repellent technologies.



Stone



Dune



Kale



Shore

THICKET

Width: 72" (182.88cm) fabric

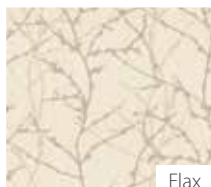
Repeat: 25" (63.5cm) H x 21" (53.34cm)V

Shown: Railroaded

Non-Woven: 100% flame retardant polyester modified with molecular antimicrobial and liquid repellent technologies.



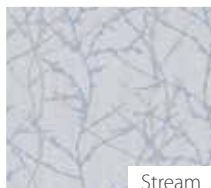
Caribou



Flax



Dawn



Stream



Twilight

TUDOR

Width: 57" (145cm) fabric

Repeat: 13.46" (34.19cm) H x 4" (10.16cm)V

Shown: Vertically Seamed

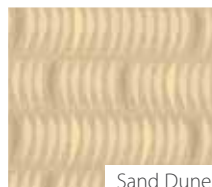
Non-Woven: 100% flame retardant polyester modified with molecular antimicrobial and liquid repellent technologies.



Seagrass



Moccasin



Sand Dune