

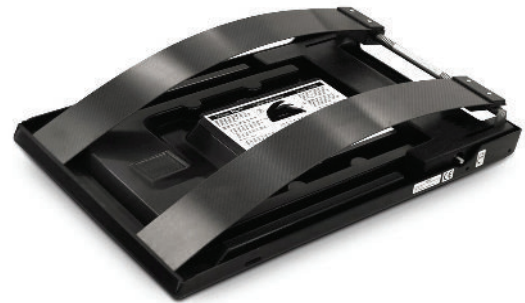
# WS-9015-J

## Surgical Table Accessories

### Radiolucent Wilson Spinal Frame Unit:

Refurbished, completely reconditioned to like new standards, complete unit, includes:

- 2 pc. set of standard pads
- Crank handle
- OSI Jackson Table Adaptor



### Specifications

Weight	36lb
Length	29"
Width	19.5"
Weight Capacity	300lb
Adjustability	Manual Crank
Lateral Adjustment	0"-6"
Intraoperative Flex	3.5"
Warranty	2 Year

### Product Specifications:

- Length 29" (73.66 cm)
- Width 19.5" (49.53cm)
- Weight of Frame (w/SC-9015 pads) 36 lbs (16.33 kg)
- Patient Weight Capacity 300 lbs (136 kg)

### Adjustments:

- Lateral Adjustment of Pads 0" - 6" (0 - 15cm)
- Intraoperative Flex of Pads for Lordosis Control 3.5" (8.8cm)
- Removable Crank Manually Adjustable Positioning



# WS-9015-J

## Surgical Table Accessories



### Refurbishing Process:

#### Total tear down:

The refurbishing process begins with an overall inspection to make sure everything is functional. Every piece is then evaluated to make sure they are up to OEM standards.

#### All surfaces refinished and polished:

After the evaluation stage, the products go into a refinishing stage where all surfaces of the legholders are either refinished or polished.

#### All wearing parts repaired and replaced:

Finally, all parts that were not up to OEM standards are repaired and replaced. Once completed, all parts are reassembled.

