



System Two

System Two

Making your surgical outcomes brighter



When you're performing surgery, you're guided by what you see. That's why it's absolutely critical that you can visualize your work with complete accuracy. At Medical Illumination, our sole focus is making that happen.

The System Two Surgery Light is brighter, whiter, cooler and more capable in the surgical theater than any previous technology. So you get the most accurate colors with unparalleled shadow control — and virtually no heat emission. All this at a price you won't sweat over.

System Two At A Glance

- ✓ 4,300° K pure white illumination
- ✓ Brilliant 130,000 lux output
- ✓ 50,000 hour-rated LED life
- ✓ Cross-focus technology
- ✓ Superior shadow control
- ✓ Five-stage dimming & ambient light (minimally-invasive) mode
- ✓ Near-zero radiated heat
- ✓ Single, dual and triple mounts for ultimate flexibility
- ✓ HD camera & monitor mounting options

Getting a better handle on things.

Controlling the brightness and position of your surgical illumination is critical. With the System Two, it's incredibly simple. Just reach up and press the center button on our 5-stage dimming control handle to adjust brightness or rotate the handle to adjust the light pattern.



5-stage dimming and illumination field are easily controlled with the sterilizable handle.

- ✓ All key light functions are controlled within the sterile field.
- ✓ Single, dual and triple mounts afford you tremendous flexibility in how you equip your operating room. Configurations can include multiple light heads and high-definition video camera and monitor options.
- ✓ Suspension arms are precision-balanced and articulated to allow the greatest reach and range of positioning with surprising ease.
- ✓ With its more sleek, streamlined profile the light head still produces amazingly brilliant output and remarkable shadow reduction, so you can visualize the site under the most optimal conditions possible.
- ✓ Optional high-definition video camera and monitor give you expanded video-assist capabilities.
- ✓ Optional touchscreen wall control provides easy remote management of lighting features.



Ambient light (minimally-invasive) mode is achieved with just a few presses on the control handle button.

Engineering meets Science meets Surgery.

No one else in the industry has gone to the extremes of engineering as have we. But then, bringing perfection to medical lighting is what we do. In developing our flagship series System Two, we sought to create the most pure, uniform white light possible, taking into account not only how LEDs operate but also how the human eye perceives color. The result is a remarkable optics technology that sets a new standard in surgical illumination.

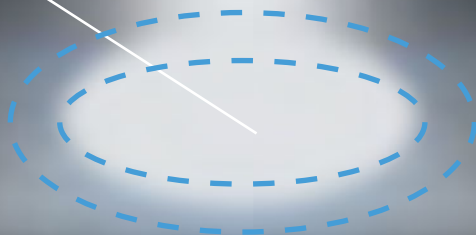
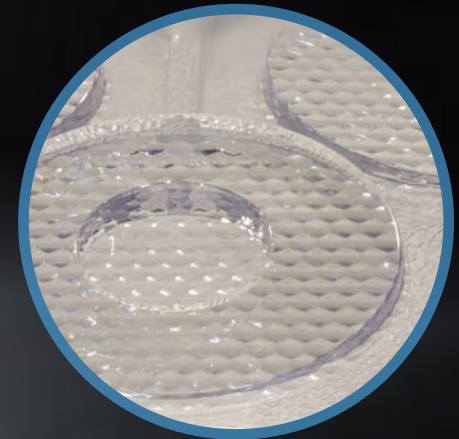
Cross Focus Technology

Both the inner and outer rings of LEDs can be cross-focused to each other by simply rotating the handle, adjusting the light pattern for the very best shadow control without moving the light head.

The light field can be adjusted from 9" - 13" with minimal reduction of illuminated brightness.

To compensate for inherent LED color imperfections, we developed an ingenious lens that merges all emitted colors into one focused beam of very white light, affording you unparalleled color accuracy.

Each LED features its own uniquely focused front refracting diffuser lens that individually redirects each beam into a single, coherent, even light field.



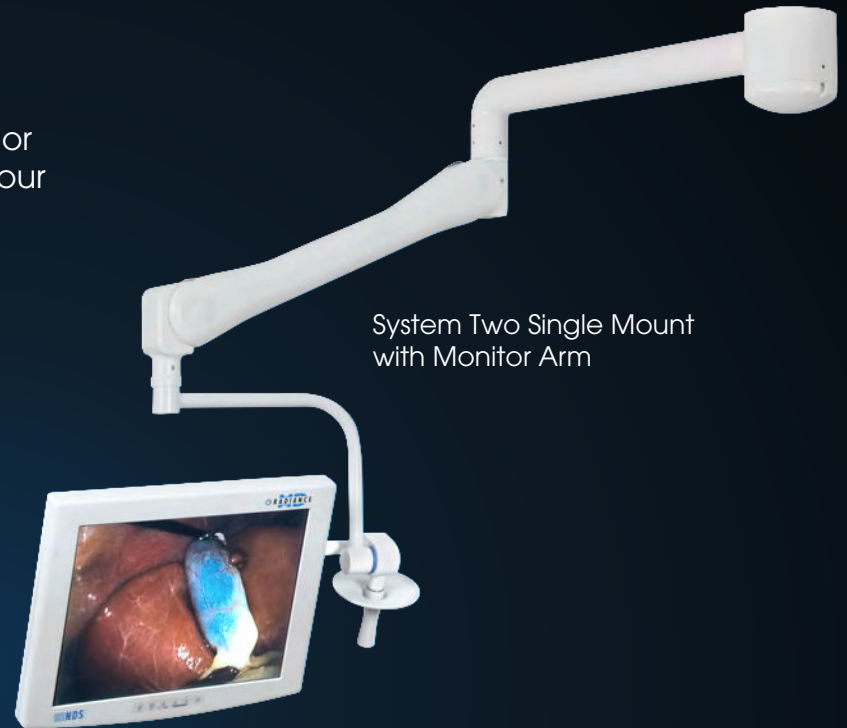
System Two Arm Options

Three lighting configurations and limitless possibilities.

The System Two comes in single, dual and triple mounts with one, two or three light or accessory options. Choose the best configuration to fit your operating rooms.



System Two Single Mount
with Light Head



System Two Single Mount
with Monitor Arm

System Two Single Mount

The single-light mounting system offers unsurpassed flexibility, exceptional illumination, and outstanding shadow control – even with just a single light head. This mounting can also support the high-definition video camera or monitor arm.

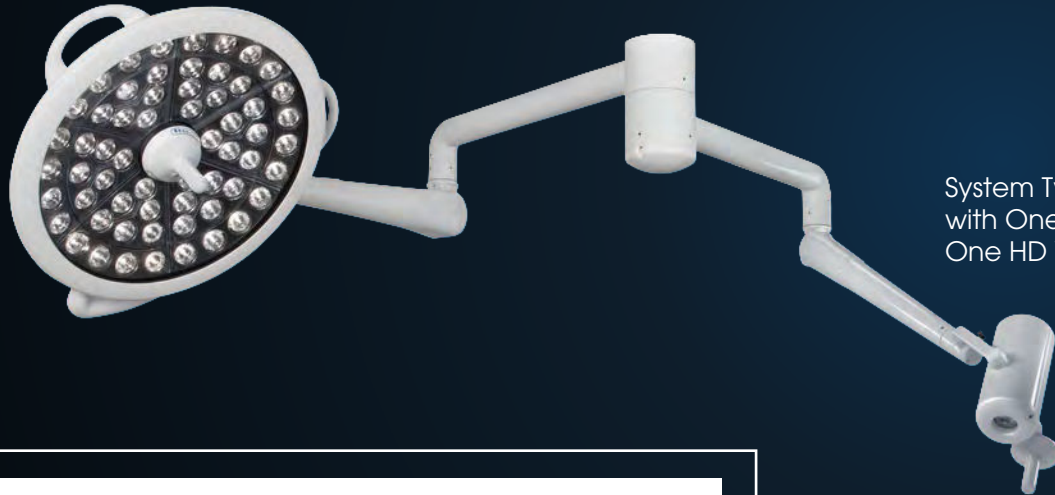


System Two Single Mount
with HD Video Camera

System Two Dual Mount



System Two Dual Mount
with Two Light Heads



System Two Dual Mount
with One Light Head and
One HD Video Camera

System Two Dual Mount

Providing dual lights for superior shadow control and intensity, or the option of one light and one video component (monitor or video camera). Without a doubt, an unparalleled value in the surgery market today.



System Two Dual Mount
with One Light Head
and One Monitor Arm

System Two Arm Options

System Two Triple Mount

The Triple Mount represents the ultimate flexibility in the surgery room. Configurations include three light heads, two light heads with video monitor arm, or video camera with two light heads. Complete surgery lighting and video capability with superb performance.



System Two Triple Mount
with Three Light Heads



System Two Triple Mount
with Two Light Heads
and One Monitor Arm



System Two Triple Mount
with Two Light Heads
and One HD Video Camera



HD Video Camera

The perfect visual support partner to the System Two series, the HD Video Camera provides affordable HD video support and features multiple zoom and focus options.

- ✓ 1080i high-definition
- ✓ HD-SDI video output
- ✓ 20x optical zoom/12x digital zoom
- ✓ Auto and manual focus
- ✓ Sterilizable handle – standard
- ✓ Mounted independently or together with lights



MONITOR ARM

The System Two Monitor Arm meets the changing needs of the advanced surgery room. Its flexibility of movement and mounting at the same axis as the light allows for 300-degree rotation above the surgery table. Compatible with most medical grade video monitors.

- ✓ Sterilizable handle for adjustments within the sterile field
- ✓ Provides options for High-Definition, fiber optics cabling and video source switching
- ✓ Compatible with most video sources
- ✓ Ceiling mount version as solo arm or together with lights
- ✓ Can mount up to 26" monitor



System Two Wall Control

The System Two Wall Control independently manages one, two, or three System Two lights.

- ✓ Touchscreen
- ✓ Bright LCD display
- ✓ Controls On/Off
- ✓ Controls Dimming Modes
- ✓ Multi-head operation



Illuminated Thinking

For the past 30 years, the goal at Medical Illumination has been to provide the medical field with the very best and most cost-effective surgery, procedure and exam lights. No other manufacturer does it better or provides greater value. Which is why so many physicians and surgeons depend on us to light the way.

By providing brighter, more color-accurate and cooler lighting, we can help you make a difference in the care of your patients. That's Illuminated Thinking.

Check the specs at www.medillum.com or contact your distributor.



547 Library Street, San Fernando, CA 91340
tel: (818) 838-3025 | usa: (800) 831-1222
www.medillum.com



Proudly made in the USA

